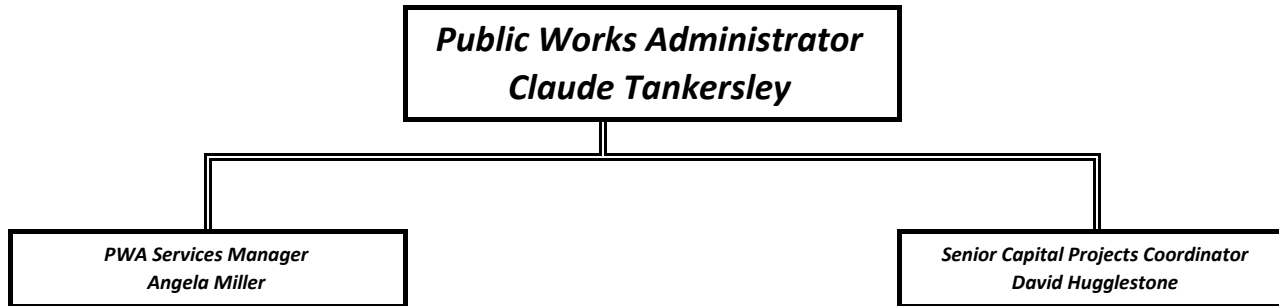
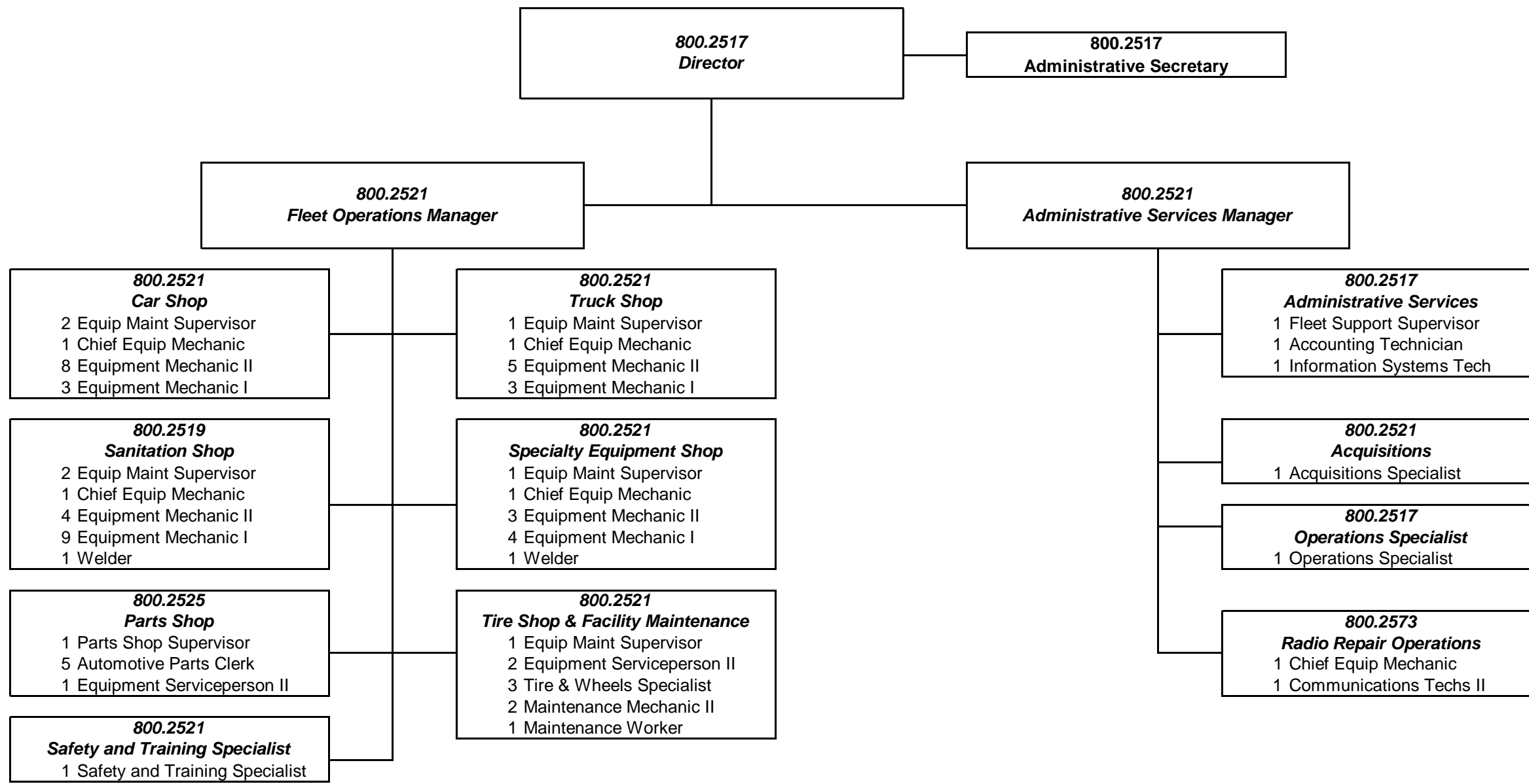


# City of St. Petersburg

## Public Works Administration-Organization Chart



**CITY OF ST. PETERSBURG  
Fleet Management Department**



**Position Counts**

- 1 Acquisitions Specialist
- 1 Administrative Secretary
- 5 Automotive Parts Clerk
- 4 Chief Equip Mechanic
- 1 Director, Fleet
- 7 Equip Maint Supervisor
- 3 Equip Serviceperson II
- 19 Equipment Mechanic I
- 20 Equipment Mechanic II
- 1 Fleet Support Supervisor
- 1 Information Systems Tech
- 2 Maintenance Mechanic II
- 1 Maintenance Worker
- 1 Manager, Administrative Services
- 1 Manager, Fleet Operations
- 1 Operations Specialist
- 1 Parts Supervisor
- 3 Tire & Wheel Specialist
- 2 Welder
- 1 Safety and Training Specialist - FY20 NEW POSITION

76 TOTAL

75 Full Time

0.75 Part Time

75.75 TOTAL